

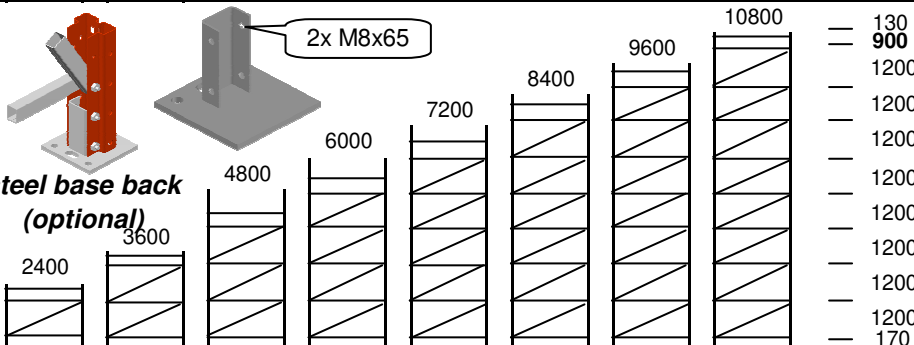
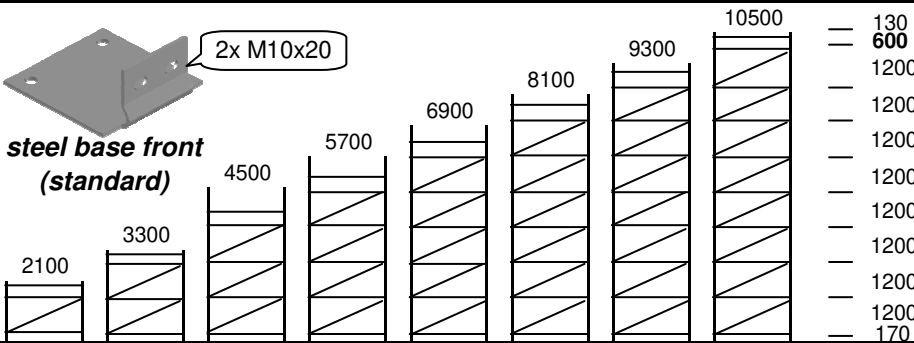
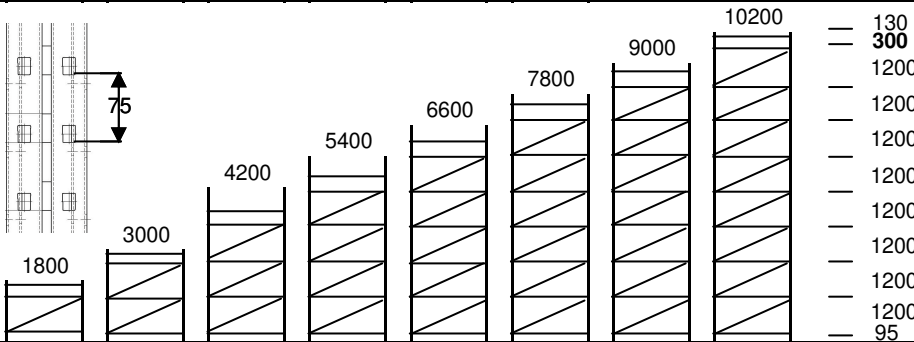
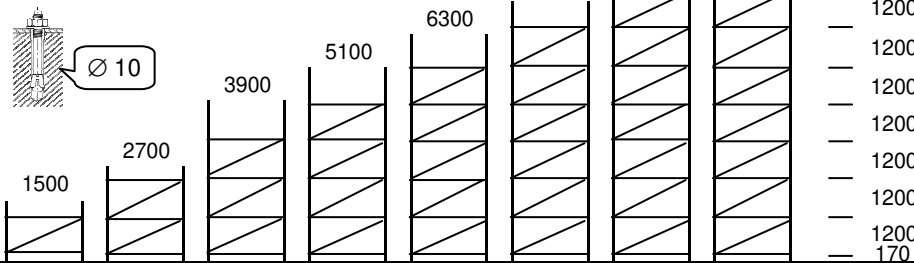
# C-RACK S175 & M225

++/32/(0)3/240 11 30  
++/32/(0)67/41 12 41



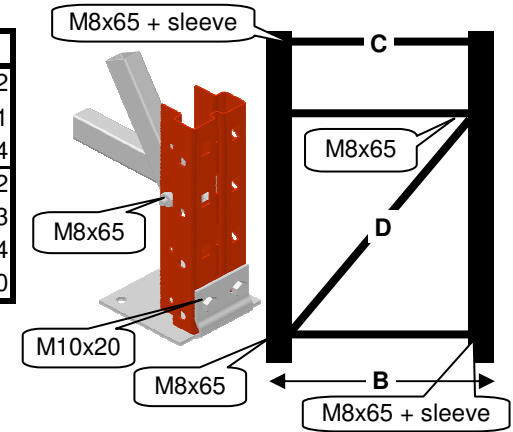
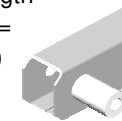
A (mm)	C	D		sleeve
	25 x 35	M8x65	25	
1500	2	1	4	2
1800	3	1	6	4
2100	3	1	6	4
2400	3	1	6	4
2700	3	2	6	2
3000	4	2	8	4
3300	4	2	8	4
3600	4	2	8	4
3900	4	3	8	2
4200	5	3	10	4
4500	5	3	10	4
4800	5	3	10	4
5100	5	4	10	2
5400	6	4	12	4
5700	6	4	12	4
6000	6	4	12	4
6300	6	5	12	2
6600	7	5	14	4
6900	7	5	14	4
7200	7	5	14	4
7500	7	6	14	2
7800	8	6	16	4
8100	8	6	16	4
8400	8	6	16	4
8700	8	7	16	2
9000	9	7	18	4
9300	9	7	18	4
9600	9	7	18	4
9900	9	8	18	2
10200	10	8	20	4
10500	10	8	20	4
10800	10	8	20	4
11100	10	9	20	2
11400	11	9	22	4
11700	11	9	22	4
12000	11	9	22	4
12300	11	10	22	2
12600	12	10	24	4
12900	12	10	24	4
13200	12	10	24	4
13500	12	11	24	2

## FRAMES 2 UPRIGHTS (3 on request)



B (mm)	C*	D*
600	543	1342
800	743	1431
900	843	1484
1000	943	1542
1050	993	1573
1100	1043	1604
1200	1143	1670

\* total length  
(axe/axe =  
- 40 mm)



Check the bracing design according to the height of the frame before starting to assemble.

**Tightening bolts & nuts is only done after assembling the complete frame !**

1. Mind the direction of the upright : it is not reversible !
2. Fix one steel base to each upright using 2 bolts M10x20 (steel base front) or 2 M8x65 (steel base back).
3. Fix one end of the lower horizontal bracing in the third lower slot with 1 bolt M8x65 + 1 sleeve.
4. Fix the 2nd end of the horizontal bracing together with the 1st end of the diagonal bracing in the third lower slot with 1 bolt M8x65.
5. Fix the 2nd end of the diagonal bracing together with the 1st end of the next horizontal bracing with 1 bolt M8x65. Repeat this operation for the following sets of bracing.
6. Fix the 2nd end of the last or last but one horizontal bracing with 1 bolt M8x65 + 1 sleeve.
7. If there is an extra horizontal bracing fix this one with 1 bolt M8x65 + 1 sleeve at either end.
8. Tighten well all bolts & nuts.
9. If wanted you can anchor the frame (1 anchor per upright) with anchors Ø 10 mm (optional).

**Please respect all drawings and installation notices meticulously. Respect the verticality of the installation (<1/400 e). Align the frames perfectly and install the beams each time secured by the 2 safety pins included.**

If the frame height is different from the standard height the top diagonal brace might not be possible to install. The 130 mm above is maintained in that case.