

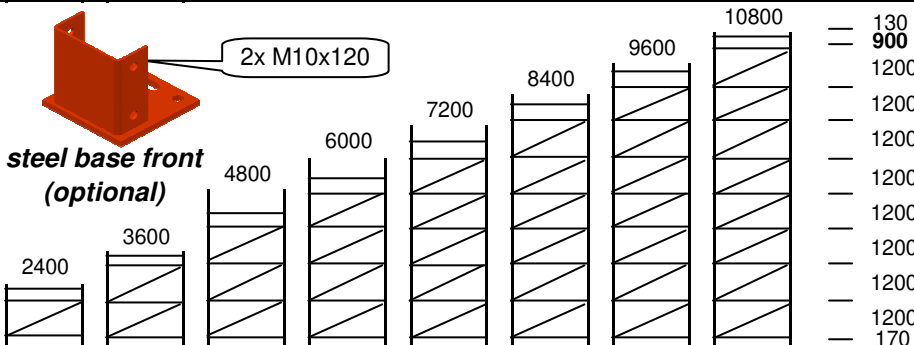
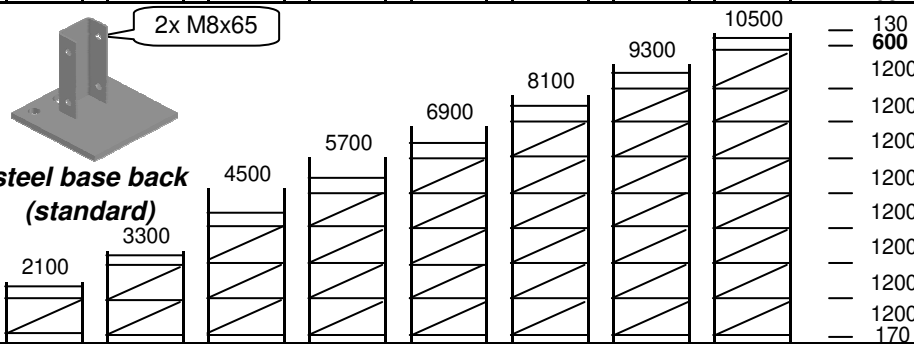
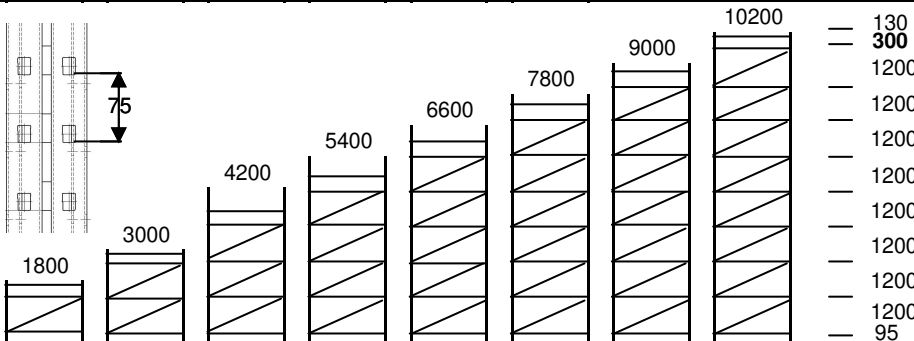
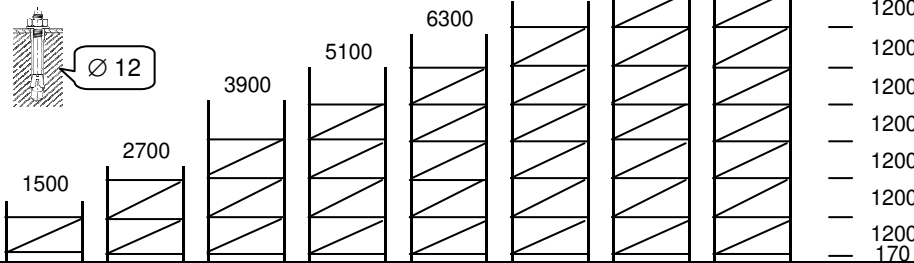
C-RACK H225 & H250

++/32/(0)3/240 11 30
++/32/(0)67/41 12 41



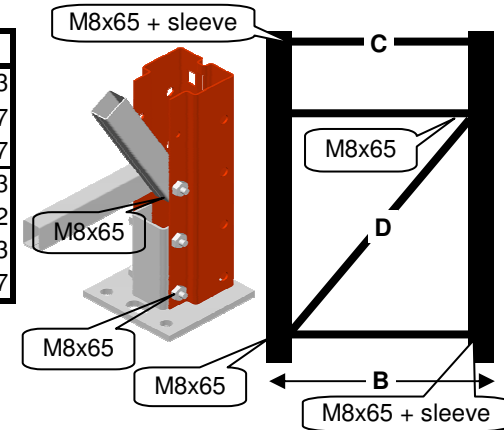
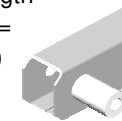
A (mm)	C	D		sleeve
	25 x 35	M8x65	47	
1500	2	1	4	2
1800	3	1	6	4
2100	3	1	6	4
2400	3	1	6	4
2700	3	2	6	2
3000	4	2	8	4
3300	4	2	8	4
3600	4	2	8	4
3900	4	3	8	2
4200	5	3	10	4
4500	5	3	10	4
4800	5	3	10	4
5100	5	4	10	2
5400	6	4	12	4
5700	6	4	12	4
6000	6	4	12	4
6300	6	5	12	2
6600	7	5	14	4
6900	7	5	14	4
7200	7	5	14	4
7500	7	6	14	2
7800	8	6	16	4
8100	8	6	16	4
8400	8	6	16	4
8700	8	7	16	2
9000	9	7	18	4
9300	9	7	18	4
9600	9	7	18	4
9900	9	8	18	2
10200	10	8	20	4
10500	10	8	20	4
10800	10	8	20	4
11100	10	9	20	2
11400	11	9	22	4
11700	11	9	22	4
12000	11	9	22	4
12300	11	10	22	2
12600	12	10	24	4
12900	12	10	24	4
13200	12	10	24	4
13500	12	11	24	2

FRAMES 2 UPRIGHTS (3 on request)



B (mm)	C*	D*
600	493	1323
800	693	1407
900	793	1457
1000	893	1513
1050	943	1542
1100	993	1573
1200	1093	1637

* total length
(axe/axe =
- 40 mm)



Check the bracing design according to the height of the frame before starting to assemble.

Tightening bolts & nuts is only done after assembling the complete frame !

1. Mind the direction of the upright : it is not reversible !
2. Fix one steel base to each upright using 2 bolts M8x65 (steel base back) or 2 bolts M10x120 (steel base front).
3. Fix one end of the lower horizontal bracing in the third lower slot with 1 bolt M8x65 + 1 sleeve.
4. Fix the 2nd end of the horizontal bracing together with the 1st end of the diagonal bracing in the third lower slot with 1 bolt M8x65.
5. Fix the 2nd end of the diagonal bracing together with the 1st end of the next horizontal bracing with 1 bolt M8x65. Repeat this operation for the following sets of bracing.
6. Fix the 2nd end of the last or last but one horizontal bracing with 1 bolt M8x65 + 1 sleeve.
7. If there is an extra horizontal bracing fix this one with 1 bolt M8x65 + 1 sleeve at either end.
8. Tighten well all bolts & nuts.
9. If wanted you can anchor the frame (1 anchor per upright) with anchors Ø 12 mm (optional).



Please respect all drawings and installation notices meticulously. Respect the verticality of the installation (<1/400 e). Align the frames perfectly and install the beams each time secured by the 2 safety pins included.

If the frame height is different from the standard height the top diagonal brace might not be possible to install. The 130 mm above is maintained in that case.